



Government of South Australia
Department for Education

2023 Information Handbook



**Cumberland
Preschool
Kindergarten.**

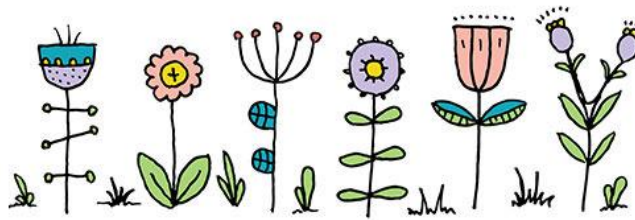
Cumberland Kindergarten

4 Tweed Street

Cumberland Park

Ph: 8293 7327

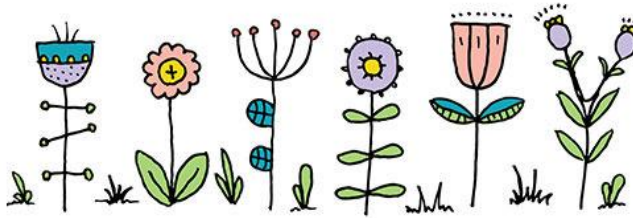
dl.4639.leaders@schools.sa.edu.au



Contents:

Page

3	Centre Information – Staff, times & term dates
4	Flow of the Day
5	Statement of Philosophy
6	Curriculum
7	Nature Play
8	Independence & Self-help skills
9	Assessment and Reporting
10	Services Offered & Contributions
11	Communication and Involvement
12	The A-Z of Kindergarten



CENTRE INFORMATION

Current Staff:

Director: Melissa Slater (Mon, Tues, Th, Fri)

Director/Teacher: Lucy Kuchel (Dir Wed, Teacher Mon, Tues, & Fri)

Teachers: Lici Davies (Tues, Thurs & Fri), Kate Pickford (Wed & Fri)

Early Childhood Worker: Victoria Swallowe (Mon - Fri)

Kindergarten eligibility & attendance:

Children are entitled to access 4 terms (1 year) of government preschool in the year before they start school. The Department for Education are introducing a mid-year intake into preschool. This means that from 2023 children who turn 4 years old:

- before 1 May are eligible to start preschool at the beginning of the year.
- on 1 May to 31 October can commence preschool through the mid-year intake at the start of term 3 of that year.

Regardless of whether your child starts at the beginning of the year, or through a mid-year intake they will undertake 4 terms of preschool.

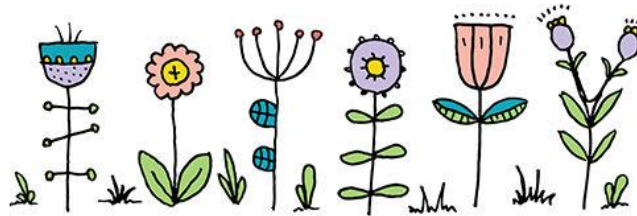
Children who turn 4 years after 31 October will be eligible to commence preschool at the start of the following year.

Children are entitled to up to 30 hours of preschool every fortnight. Cumberland Kindergarten offers every child 2 full days per week. The children are placed in either Group A: Monday & Wednesday or Group B: Tuesday & Thursday. We then also offer a three hour session on Fridays once per fortnight.

All day sessions: 8.45am to 3.30pm.

Group A: Monday & Wednesday (full days), Friday (odd weeks 8.45-11.45am)

Group B: Tuesday & Thursday (full days), Friday (even weeks 8.45-11.45am)



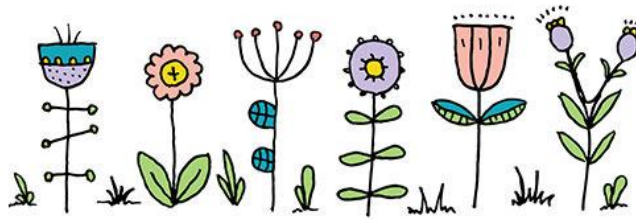
2023 South Australian School Holidays and Term Dates

Period	Start	Finish	Length
Term 1	Monday, 30 January	Friday, 14 April	11 weeks
School Holidays	Saturday, 15 April	Sunday, 30 April	
Term 2	Monday, 1 May	Friday, 7 July	10 weeks
School Holidays	Saturday, 8 July	Sunday, 23 July	
Term 3	Monday, 24 July	Friday, 29 September	10 weeks
School Holidays	Saturday, 30 September	Sunday, 15 October	
Term 4	Monday, 16 October	Friday, 15 December	9 weeks

Flow of the Day:

8:45am:	Arrival – Activities inside and outside
9:00am:	Large Group Time
9:30am:	Play time indoors and outdoors
10:30am:	Fruit
11:30am:	Group time/Story
11:45-12:30:	Lunch time
12:30pm:	Play time indoors and outdoors
2:15pm:	Fruit
2:30pm:	Packup
3:00pm:	Mat time
3:30pm:	Goodbye

*** This is a guide only! Times stated during our day are adjusted according to children's needs, weather, etc.*



STATEMENT OF PHILOSOPHY

Relationships - Play - Nature

Our vision is to provide a high-quality play based program where educators and families work collaboratively to provide learning opportunities that meet the needs of individual children.

We value

- Building and fostering strong relationships with children, families, educators and our community
- An environment where children's learning is nurtured through play and incorporates children's interests
- Our natural environment and opportunities for children to engage with and learn through nature

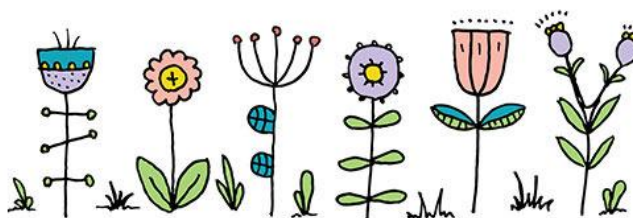
We recognise

- The need to give children time and space to explore and learn at their own pace
- The importance of embracing and respecting the diversity of each child and their family, including prior experiences, culture, interests, development and learning styles
- That children are competent and capable learners
- The importance of opportunities for educators to engage in professional development, reflective practice and collaboration with colleagues to provide quality teaching and learning
- The connection Kaurua people have with the land and aim to deepen our own understanding of Aboriginal perspectives with the children throughout our program

We will

- Provide an environment where everyone can feel happy, safe and secure and supported to develop a sense of belonging
- Engage with and in our community
- Work in partnership with families
- Give children opportunities to develop dispositions for learning, such as being curious, confident, persistent, independent, resilient, and courageous
- Ensure that our environment reflects our belief in the importance of nature play

This philosophy statement was reviewed in collaboration with families, children and educators - 2022



CURRICULUM

Play is very important for children. Through play young children explore and learn to understand the world around them as they come to communicate, discover, imagine and create. When children play they are showing what they have learned and what they are trying to understand. By working together parents and educators can enhance a child's learning and wellbeing.

Cumberland Kindergarten uses the Early Years Learning Framework for Australia, called 'Belonging, Being and Becoming'. It is a national framework for children from birth to five years. The Early Years Learning Framework describes childhood as a time of belonging, being and becoming:

Belonging: is the basis for living a fulfilling life. Children feel they belong because of the relationships they have with their family, community, culture and place.

Being: is about living here and now. Childhood is a special time in life and children need time to just 'be' - time to play, try new things and have fun.

Becoming: is about the learning and development that young children experience. Children start to form their sense of identity from an early age, which shapes the type of adult they will become.

The framework has 5 outcomes:

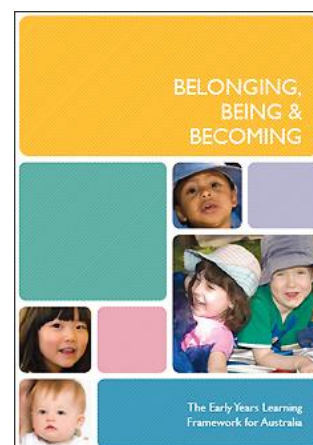
Outcome 1: Children have a strong sense of identity.

Outcome 2: Children are connected with and contribute to their world.

Outcome 3: Children have a strong sense of wellbeing.

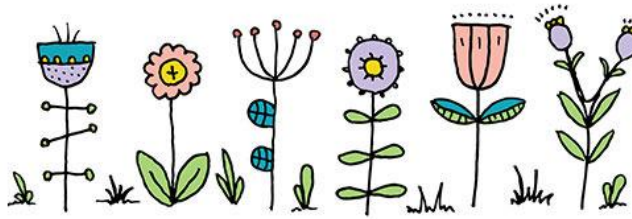
Outcome 4: Children are confident and involved learners.

Outcome 5: Children are effective communicators.



Documentation of the Curriculum Program:

We document our learning journey at kindy in a large display book which is located near the sign in/out area on a large wooden easel. This Learning Journal contains information about the curriculum the children engage in, photos, children's drawings and their comments. The children love to browse this book to re-visit their prior learning and look at photos of their family and friends. Regularly having a look through this book is a way that you can gain knowledge about what your child has been doing at kindy. Also please take the time to look around the walls of our kindy to notice the children's artwork and current learning.



NATURE PLAY

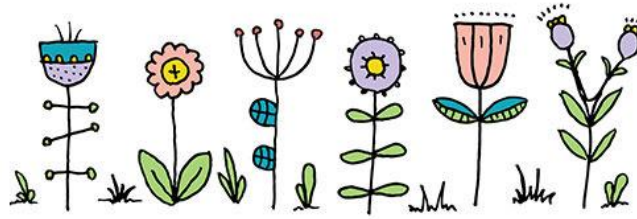
Over the last few years we have been on a journey of developing our approach in the area of Nature Play. In the past, playing outside in nature was a part of everyday, normal childhood experience. Many of us have fond memories of time spent outdoors riding our bikes around the neighbourhood, swinging from the clothesline, climbing trees, playing backyard games of cricket or soccer that spilled out onto the street, picking fruit straight from homegrown trees, camping, bushwalking and picnics in our beautiful national parks.

Children today are increasingly unable to relate to these experiences. In fact, South Australian children are spending less time outside in nature than at any other time in our history. In the space of just one generation, there has been a dramatic shift in childhood activity from outdoors to indoors driven by a number of factors including the advent of new screen-based technologies and the emergence of a risk-averse culture.

This has far-reaching consequences for our community. In parallel with the shift indoors we are seeing increasing rates of childhood obesity, depression and behavioural disorders. Research across the world supports the view that unstructured outdoor play is fundamental to childhood. Opportunities for outdoor play and immersion in nature are essential to the health and wellbeing of children, helping them to develop to their full potential. Participation in nature play has the ability to enhance children's cognitive flexibility and creativity, boost self-esteem and improve resilience. 'Nature play' includes any unstructured play outdoors such as riding a bike, climbing a tree, gardening, bushwalking and swimming at the beach (Nature Play SA website).

At Cumberland Kindergarten we believe that being outdoors and experiencing nature is an important aspect of our children's day. We will provide plenty of opportunities for children to be outside and set up a range of experiences that reflect our belief in this vital aspect of children's play. This may include water play, sand/mud play, using tools like binoculars/ magnifying glasses, observing insects and creatures, monitoring the weather, gardening, caring for our worm farm or composting, cubby building, using natural objects in play (eg. Gum nuts, seed pods, logs/sticks, rocks, etc.) and the list goes on! Nature play can be messy and wet (which is why we ask families to send spare clothes) but it is a lot of fun. Sometimes children need to be given permission to get grubby and engage with nature and reassurance to 'have a go'.

Nature play will be a feature of our curriculum throughout the year and we will provide information for families about ways that you may continue this and support this learning at home. Our excursions (or visitors to kindy) each term generally have a nature based focus. Examples include: our annual Kuitpo Forest excursion, Adelaide Zoo, Road Safety School, Oaklands Estate wetlands, other parks and outdoor play spaces, & visiting animal programs and Mud Week celebration.



INDEPENDENCE & SELF-HELP SKILLS

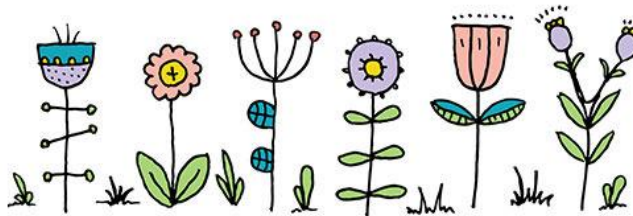
We believe that during a child's year at kindergarten it is our role to work closely with families to help develop their child's independence and self-help skills.

Independence contributes to the development of self-esteem, identity, and wellbeing. Doing something for yourself produces a powerful sense of achievement and success. When children have opportunities to make choices, to attempt tasks for themselves, and to take on increasing responsibilities, their sense of themselves as competent members of society grows.

We have a sense of 'agency' when we feel in control of things that happen around us; when we feel that we can influence events. This is an important sense for children to develop. Too often adults treat children as though they are incapable of making decisions or holding valid options. If instead we listen to and respect children's words and ideas, we model collaboration and cooperation and show that we recognize children's capabilities. ('Promoting independence and agency' Early Childhood Australia)

Children can gradually be expected to take more responsibility for taking care of themselves and completing tasks required, in relation to toileting, dressing, eating and organising themselves. Families can work on these areas at home to build children's skills prior to starting kindergarten. We will continue to support and encourage children with these skills once at kindy. Some things to try include:

- Helping your child to learn to dress themselves, eg. Putting clothes on and off, putting on socks and shoes
- Expecting your child to feed themselves and eat independently, eg. Using a spoon for yoghurt, picking up their sandwich and biting it
- Supporting fussy eaters to begin expanding their range of foods including fruits
- Helping your child to toilet themselves, including wiping their own bottom
- Working with your child on a morning routine for leaving home and arriving at kindy, eg. Packing their bag at home and their morning routine at kindy (hang up their bag, wash hands, sign in).



ASSESSMENT AND REPORTING

Children's Portfolios:

A child's learning in the early years is dynamic and fluid. As Early Childhood Educators we value the process of learning - the problem solving, thinking and communicating which children demonstrate when they interact with peers, materials and adults. We have chosen to use portfolios to make your child's learning "visible" to you. This enables us to monitor and assess children's skill development, knowledge and understanding, ensure our curriculum is supporting optimum learning and ensure our accountability as educators. Your child's portfolio will include a variety of evidence of their development. The portfolio may include written observations, work samples, photographic documentation, your child's comments and conversations, and educator's interpretations.

Children are presented with their portfolio at the end of their year of kindy before starting school. The Portfolios are kept in cube shelving for the children and parents to look at any time.

Individual Learning Plans:

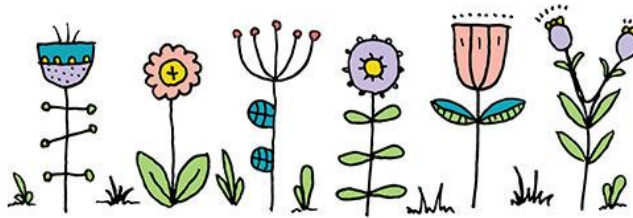
Your child will have an individual learning plan during their time at kindergarten. This learning plan (ILP) is linked to the Learning outcomes stated in the Early Years Learning Framework for Australia. Belonging, Being and Becoming. The plan identifies areas of strengths, interests, goals for each child and strategies. Parents are invited to participate in an ILP meeting with your child's teachers to create and update this plan. (You will receive information about this during your child's first term).

Statement of Learning:

A Mid-Year Learning Journey statement is provided at the end of your child's 2nd term of kindy. A copy is provided to families to read and comment on. A Statement of Learning is written in your child's last term. It is more detailed and reflects the five outcomes of the Early Years Learning Framework. Parents are invited to read, comment on them, sign and then the Kindergarten will forward them to the school your child is enrolled in.

Parent – Teacher Communication:

We offer Learning Conversation appointments at the end of your child's first term to discuss their transition into kindy however we believe that communication between staff and parents should be ongoing. We also ask that parents have regular conversations with staff, and that if you do have any concerns, to please arrange a time for a more formal discussion with the teacher. If staff have concerns, they will arrange to discuss these with you at a mutually convenient time.



SERVICES OFFERED AND CONTRIBUTIONS

Contributions and Accounts:

Parents are charged a Kindergarten Contribution of \$190.00 per term. Accounts are issued at the start of each term. Contributions can be paid by internet banking using the information on your invoice. A receipt will be issued by the Finance Officer via your child's note pocket. Contributions are reviewed by Governing Council at the end of each year in preparation for the following year.

Support Services:

The Dept. for Education (DfE) have specific responsibilities to include ALL children in their programs. Information about special needs, enrolments and access to other DfE services is available from the Director, eg. Speech Pathology, Psychology, etc. The centre also has strong relationships with other specialist early childhood organisations and services. Aboriginal children are able to access Pre-school Programs at 3 years of age. Children for whom English is not their first language may be eligible to access support through the DfE Bi-lingual Program.

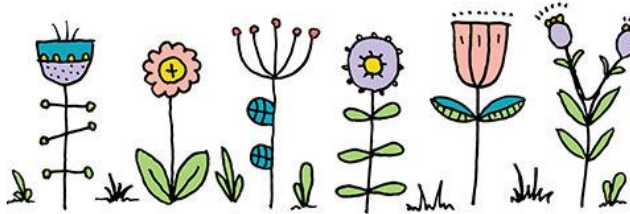
Child & Family Health Service:

Children will have the opportunity to have a general health/development screening before beginning school. These screenings are free, and are highly recommended. CaFHS recommend that children are screened when they are 4yrs old and staff will offer families appointments during the year. If you wish to make an earlier appointment, please Phone: 1300 733 606

SA School Dental:

The School Dental Service offers expert oral health care to eligible children at clinics throughout South Australia. This care is provided by teams of dentists, dental therapists, and dental assistants. All preschool, primary school and secondary school students, aged under 18 years, are eligible for oral health care with the School Dental Service. All dental care is free for toddlers and preschoolers.

Our Local clinic is: Clapham Primary School – Calgary Ave, Clapham
Ph: 8374 2053



COMMUNICATION AND INVOLVEMENT

Most of our communication with families is done via email, however each child is allocated a note pocket as well. Hard copies of excursion notices or notes requiring a return slip are placed in your child's note pocket on a regular basis. The newsletter/ fliers will also contain information about our Educational Programs and will report on your child's learning. Other information about learning is displayed around the kindergarten, including the individual work of children. We believe that celebrating success is very important.

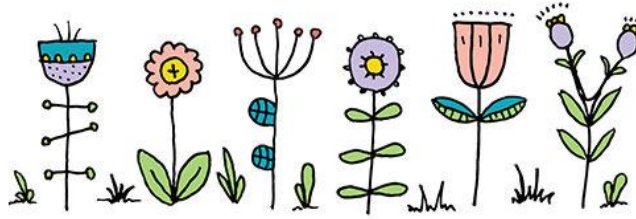
Arrangements for alternative modes of communication - for example, when parenting is shared or when one parent or carer isn't able to access the Kindy - can be easily made by discussing your needs with staff. If staff are not available for an informal discussion, please let us know of an alternative time that is convenient for you. You are welcome to discuss a wide range of matters, like your child's development, the Kindy's educational program, health matters or behaviour support for example. Often families like to find out more about their children and how they learn in a play-based program. We can provide information on the many areas in which children develop and the reasons why this development is important.

It is also very important for us hear from you. Information from home is invaluable, as it allows us to know YOUR child better. We welcome your involvement. You may want to stay and read to children, help children with table activities or share a skill(s) with us. Please talk to us about opportunities for you to share your knowledge, skills and time with our Kindy. We have various rosters that give parents the opportunity to assist the Kindy in areas like laundry, gardening, materials preparation etc.

Governing Council:

The Governing Council works in partnership with the kindergarten team to ensure the smooth running of the centre. It is a friendly group of parents who meet twice a term to discuss kindergarten priorities, financial matters, facilities, possible kindergarten functions, and curriculum directions. It is an excellent avenue to gain an understanding of how the kindergarten operates while making some good friends along the way. Governing council members and office bearers are elected at the Annual General Meeting in February.

Please consider joining the 2023 Governing Council for our kindergarten.



A-Z OF KINDERGARTEN

Arriving at kindy and farewelling your child:

An educator will greet children and families at the gate in the morning upon arrival and sign your child in. If someone different will be collecting your child that day, please provide their name and contact phone number. If your child is reluctant to let you go on arrival, please let an educator know. We are used to helping children separate from parents and we can help you to set up a farewell routine that works for you both. Our session does not start until 8.45am, and we ask that you do not leave your child until then. Prior to this time staff are preparing for the day by having a morning meeting and setting up learning spaces.

Banking:

Our preferred method of payment for Parent Contributions or fundraising money is via Internet Banking funds transfer directly into our bank account:

Account Name: Cumberland Preschool Kindergarten

Bank: BankSA

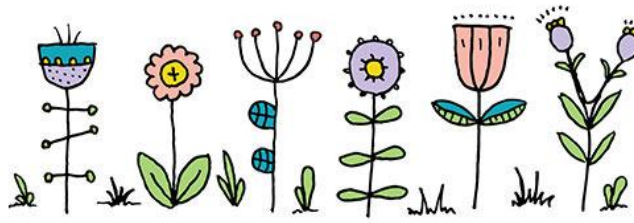
BSB: 105 075

Account: 293 039 440

Description Field: Your child's name

Birthdays:

When a child has a birthday we like to celebrate with the child at group time by: lighting candles on our 'fake cake', singing 'Happy Birthday', giving special 'birthday claps', presenting the child with a card and allowing the child to tell us about their special day. Please save treats like cakes, etc. for the child's birthday at home.



Clothes:

Please only send your child to kindy in appropriate clothing, eg. NOT their best outfits, sun safe and easy for them to manage independently (No tricky belts!) for toileting and changing clothes. We do our best to protect your child's clothes with smocks for painting, but a lot of kindy learning can be messy. It is hard for children to fully engage in an activity if they are concerned about getting their clothes messy, dirty or wet. Please send a change of clothing in your child's bag to the event they have a toileting accident or get messy during the day. Children's clothing needs to be suitable for climbing and they need to wear suitable footwear – no thongs, slip on shoes or crocs. **Please name your child's clothes and shoes. If it becomes lost, there is a better chance it will be returned to you.**

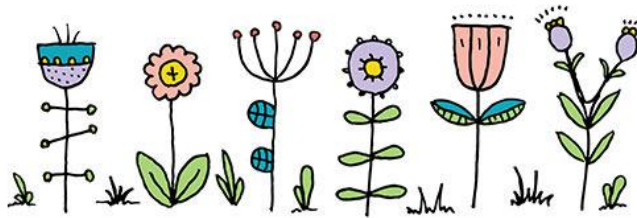
Kindy uniforms are available to purchase online through EduThreads. Orders, delivery and any returns are all managed by this company and is a cost effective and time saving option for kindy. You get the benefit of shopping from home at your convenience and can have orders delivered ready for the start of kindy! We have sample clothes at kindy for you to check sizing or quality of the product. For more information <https://eduthreads.com.au/collections/cumberland-pre-school-kindergarten>

Collecting your child:

Over the last few years, we have implemented different routines around collection time due to Covid-19. We will advise you of the current routine prior to your child starting. However, please be prompt when collecting your child at the end of the day as it can be distressing for your child if you are late. A staff member will say goodbye to your child at the end of the session. This routine helps ensure that each child is safely handed over to a caregiver before leaving the kindergarten. Staff will sign your child out when you collect them. Please talk to a staff member if you have any concerns about this process.

To help keep you and your children safe at kindergarten please:

- Supervise younger siblings when they are visiting the Kindy
- Please do not ride bikes in the yard. Bikes can be stored behind the green gate near the bins
- Be aware of the gates and the need to ensure that only children in your care are exiting with you
- Be aware of the Evacuation and Invacuation Procedures
- Always let a staff person know if you are collecting your child earlier and verbally farewell us so we know they have been collected as per the plan
- Please keep us informed of your child's health needs
- Have fun and enjoy the wonderful space and learning environment that is Cumberland Kindergarten



Emergency Contact Details:

It is important that Emergency Contact Details provided to staff at the time of enrolment are kept up to date with names, telephone numbers, addresses and medical information in case of illness or accident while your child attends kindergarten. Please ensure that if your details change you immediately notify the kindergarten.

Enrolling at school:

It is advisable to enrol at a school around the same time as your child starts at Kindergarten. It is also important to let us know which school your child will be attending so the kindergarten staff can be actively involved in their transition to school. We can direct families to information sources about schools in our area if required.

Excursions and Incursions:

These are an important way of extending upon and celebrating children's learning. Detailed information and consent forms are sent home a few weeks prior to excursions, seeking parental permission in writing. We always take parent helpers on excursions, the number depends on the size and composition of the group. We will send home a form requesting helpers. Adults are selected for excursions at the discretion of the staff team, considering the children's needs, group size, excursion location and previous participation in excursions. ***If you have concerns about your child attending an excursion, please speak to us. It is important that children do not miss out on the opportunity to participate in excursions (unless ill) as it will impact their learning and possibly social connections with peers.***

If a performer or visitor to the centre is organised as part of the program we will also notify parents. Costs for excursions and incursions are included in the parent contribution. We may take the children on short walks. This may include Edwardstown Primary, the park nearby or other local areas, eg. Shops on Winston Ave. A consent form will be required. An excursion risk assessment is always implemented by the educators.

Facebook:

Just search for Cumberland Preschool Kindergarten on Facebook to find our page. Like the page for quick updates about the developments of the kindy and to see photos of what has been happening. We are very careful to only post non-identifying photos of children to maintain their privacy and online safety. We also have a private Facebook group specific to the cohort that year. Parents need to send a request to join this group.



Hats:

Please send a named, suitable legionnaires style or broad brimmed hat for your child to wear when playing outside. Children need to wear hats in Terms 1 and 3 & 4. We monitor the UV levels and remind children to wear their hats when the level is 3 or above. See our Sun Protection Policy for more information. Please ensure your child's hat does not have a chin staff as this can be a choking hazard.

Library:

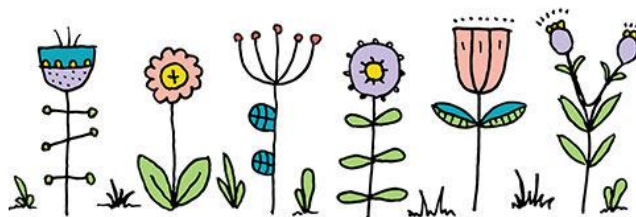
Books are available for loan from both our children's and parents' libraries. Staff support children to select and borrow a library book during the day on Mondays & Tuesdays. Please send a named cloth library bag to carry books in. Library bags need to be put in the big blue box when children arrive at kindy in the morning. Please encourage your child to look after the book they have borrowed. Please inform us if any book is damaged or lost so we can repair or replace it.

Lost Property:

Please name all types of clothing (even those worn) and shoes. This not only helps staff return them to their owners, but also helps the children recognise their names. We have a lost property box. Please check this regularly for your child's belongings.

Lunch:

Lunch time is a relaxed and social time at kindy when the children all sit together to eat their lunch, supervised by staff. The children have about 30 minutes to eat. Please send a packed healthy lunch (e.g. sandwich, roll, salad, dry biscuits and cheese). We ask that you do not send lollies, chips or chocolates. There are lots of healthy choices that can be made. We ask that all children bring a drink bottle labeled with their name. Please only put water inside. Please NAME all containers. Children's lunches remain in their bags so, if it is warm, please place a small ice pack in your child's lunch box to help keep their food cool. REMEMBER: Children need 2 serves of fruit or veg, one for the morning and one for the afternoon. Water is always available. Please refer to our Food & Nutrition Policy for further information.



Medical Information:

At Cumberland Kindergarten the health and wellbeing of the children in our care is of the highest priority. Children who are unwell should not come to kindergarten. Instead, they need time to recover in an environment where the sickness cannot be passed onto other children and staff. In the event of your child becoming ill at kindergarten we will telephone you to collect your child.

The following information is to provide guidance as to when your child is likely to be infectious and therefore needs to be excluded from kindergarten. This is likely to be when your child has:

- A temperature of 38C or higher,
- Been vomiting in the last 24 hours,
- Diarrhoea,
- A productive cough,
- Conjunctivitis,
- Coloured nasal mucous,
- An undiagnosed rash,
- Head lice (until treated),
- Cold sores.

Infectious disease: Please notify staff if your child contracts an infectious disease. Your doctor will be able to inform you when your child can return to kindergarten.

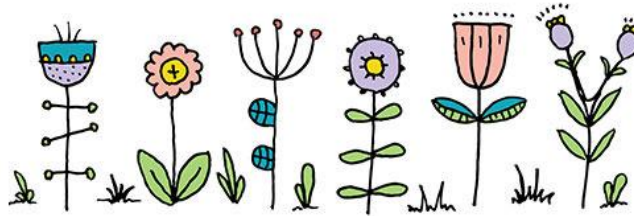
First Aid: Staff have first aid training and will treat minor injuries. Anything else is referred to parents so that they can contact their own doctor. In an emergency an ambulance will be called, and parents contacted. If we cannot contact you, we will call your listed emergency contacts. Please ensure all contact numbers remain updated.

Medication: Staff will only give medication (e.g. antibiotics), that has been prescribed by a doctor and which is in the original container as dispensed from the pharmacy. Children with a medical condition such as asthma or allergies will need a health care plan completed by a doctor detailing the condition, medication, and any action to be taken.

Allergies: Allergies and anaphylaxis (a severe and life-threatening reaction to various allergens) is becoming increasingly common health issue amongst our community. For some of these children, coming into contact with traces of these allergens can be life threatening. We all work together to help keep these children safe. Nuts are a common cause of allergic reaction and we are therefore a "Nut Free" kindy.

Some ways that you can assist include:

Ensuring no nuts, or products containing nuts, are sent for your child to eat... e.g. peanut paste, Nutella, nut muesli bars etc. Encourage your child to not share food, except when provided by the Kindy... e.g. fruit time, cooking activities. All donated materials should be given to staff as we check the pasting materials and eliminate boxes and containers, which may be contaminated with small traces of nut oils. At times there may be children with other allergies, which may mean we need to eliminate certain foods, eg. Eggs. We will inform families of this on an 'as needed' basis.



Sunscreen:

Please apply to your child before coming to kindy during Terms 1 & 4. Staff will support your child to reapply it at lunch time. If your child is sensitive to sunscreen, please send along their own NAMED sunscreen.

Toys:

We ask that children do not bring their own toys to kindergarten in case they get broken or lost. If your child takes home a toy or item that you think is from the kindergarten, please return it as soon as you can.

What to bring to kindy:

Please provide your child with a clearly named bag for their Kindy belongings including:

- A sun safe hat (broad brimmed or legionnaires style)
- A full change of clothes (including spare undies and socks)
- Two serves of fruit/vegetables **to be packed separately to lunch** (to be left in your child's bag for morning & afternoon snack)
- A lunchbox containing a healthy lunch (packed with an ice brick in warm weather)
- A drink bottle with water

The bag can be placed on a hook on the verandah. Please ensure your child can identify their own bag with their name and picture tag. It is not helpful when your child tells us it's the princess/superhero bag and there are 3 of the same type!

Thank you for choosing Cumberland Kindergarten, we hope you find your year with us rich & rewarding. We look forward to you joining our kindergarten community!